

Supplemental USB Driver Installation Guide

Install the USB Driver as explained within the Auterra Dyno-Scan User Guide. Ensure you have completely followed the instructions within the User Guide.

Ensure the USB OBD II adapter is plugged into your Windows PC USB port.

Go to the Windows Start button > Control Panel > System > Hardware tab > Device Manager button to display the Device Manager as show below.

Expand the Ports (COM & LPT) setting and see the Dyno-Scan OBD II USB Adapter Port (COMX) entry, where COMX is the COM port to select within the Dyno-Scan software on the Tools > Options menu dialog. If you do not see this entry, then the Auterra USB Driver is not installed correctly.

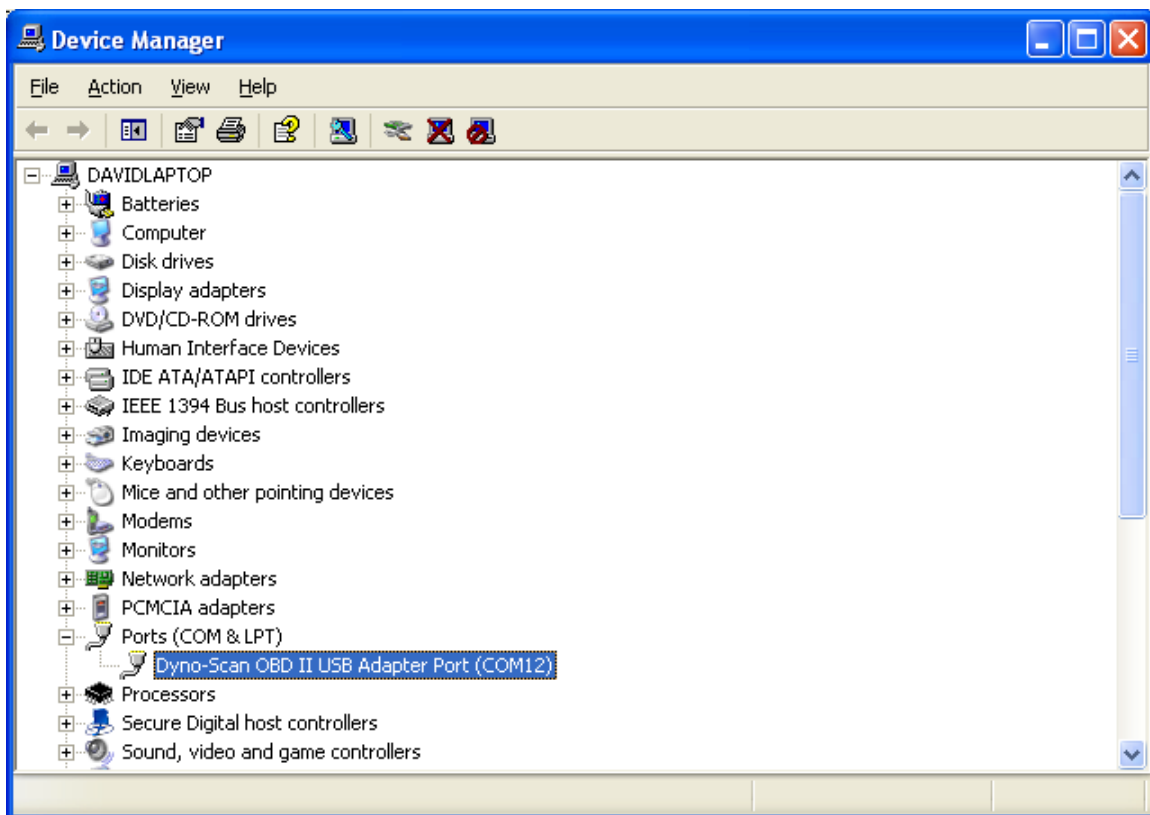


Figure 1: Correct Installation of the USB Driver

If you see a yellow question mark icon (?) in the Device Manager panel (see Figure 2), expand that entry. Then **right** mouse click on the Dyno-Scan OBD II USB Adapter and select the "Update Driver..." option from the shortcut menu.

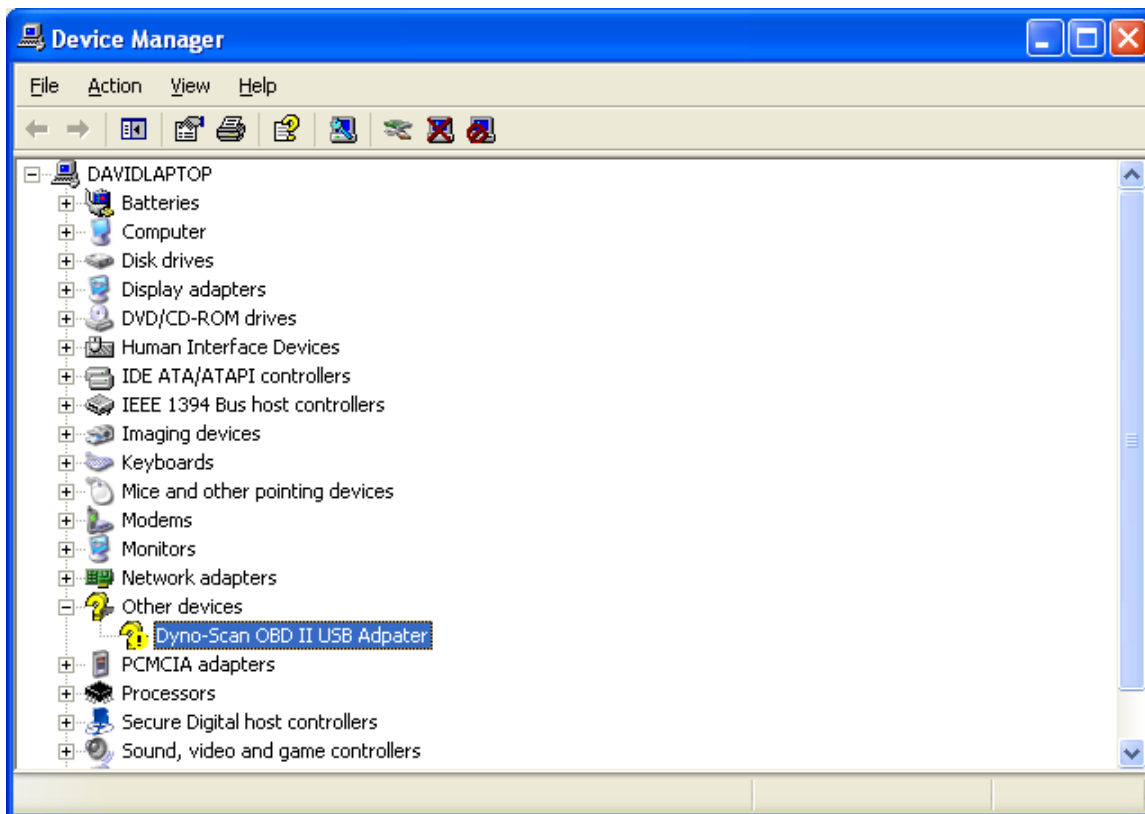


Figure 2: Incomplete Installation of the USB Driver

Ensure the Auterra Dyno-Scan software CD ROM is accessible and point the Windows Hardware Installation Wizard to the **d:\USB Driver** directory on the Auterra CD ROM whenever prompted (replace the letter **d** with whatever letter your CD ROM is installed on).

The installation is now complete and you should see an entry in the Ports (COM & LPT) as shown in Figure 1.

Start the Dyno-Scan software. Go to the Tools > Options... dialog and enter the COM port number shown from the Device Manager. Your scan tool is now ready for use.

If there is still no entry within the Ports (COM & LPT) section, try uninstalling the USB Driver completely and then reinstalling the driver from the beginning as described within the Auterra Dyno-Scan User Guide. Unplug the USB OBD II adapter and go to the Windows Start button > Control Panel > Add Remove Programs to remove the "Dyno-Scan OBD II USB Adapter Port" program. Once removed, plug in the OBD II USB adapter and follow the User Guide instructions.

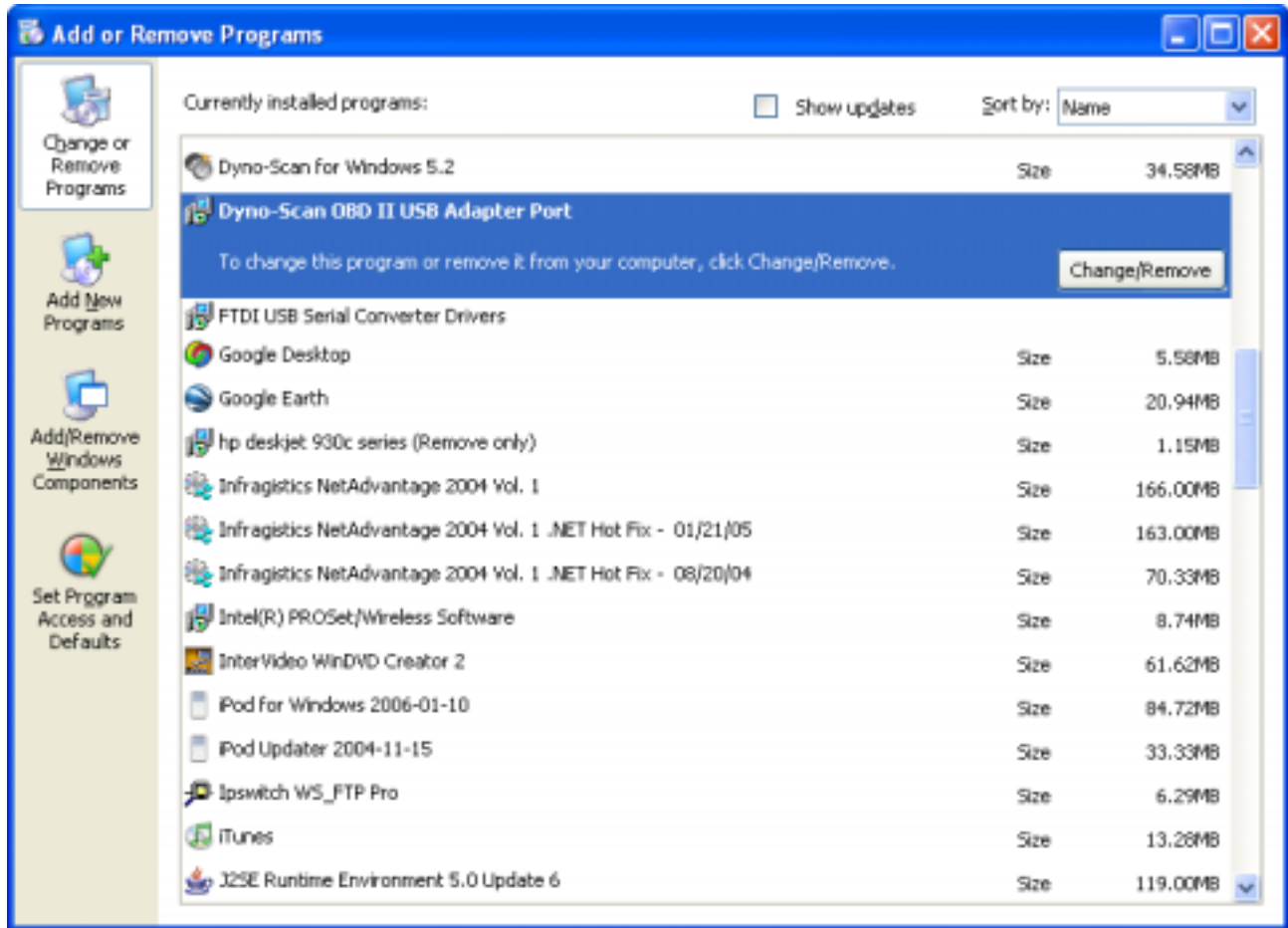


Figure 3: Uninstall USB Driver